

ANNEXURE-I

Type of Tower	Type & String	Insulator unit weight (kg)	Diameter of each disc (mm)	Creepage of each disc (mm)	Spacing of each disc (mm)	Total no. of insulators per arm	Total no of insulator per string	Total Wt of insulator per string (kg)	Total weight of insulator string (alongwith H/w fitting)kg	Length of insulator string (mm) [min.]	Length of insulator string (mm) [max.]
DA	Double I Suspension (2x160kN)	11.8	330	590	170	43	86	1014.8	1105	8460	9325
DB	Quad Tension String (4x210kN)	13	330	545	170	46	184	2392	2827	10767	11712
DC											
DD45											
DD60											
DD45	Single Suspension Pilot (1x160kN)	11.8	330	590	170	43	43	507.4	589	8290	9193
DD60											

- TECHNICAL TITLES:**
- 1) ALL DIMENSIONS ARE IN mm.
 - 2) GENERAL TOLERANCES : $\pm 3\%$.
 - 3) ALL FERROUS PARTS HOT DIP GALVANISED & SPRING WASHER ELECTRO GALVANISED AS PER POWERGRID SPECIFICATION.
 - 4) ALL DIMENSIONS ARE AFTER GALVANISATION EXCEPT DRILLED HOLES.
 - 5) HARDWARE TOLERANCES ON LENGTH $\pm 2\%$.

* Revision: Change in length due to use of DISC Insulator for 31mm/kv

**POWER GRID CORPORATION
OF INDIA LIMITED**
(A GOVERNMENT OF INDIA ENTERPRISE)



TITLE:- 765 KV D/C (HEXA ZEBRA) DOUBLE "I" SUSPENSION STRING
FOR SIX BUNDLE "ZEBRA" ACSR CONDUCTOR
UTS-350 KN

CLEARED BY

[Signature]
SR. GM
(ENGG-TL)

[Signature]
CGM
(ENGG-TL)

[Signature]
ED
(ENGG)

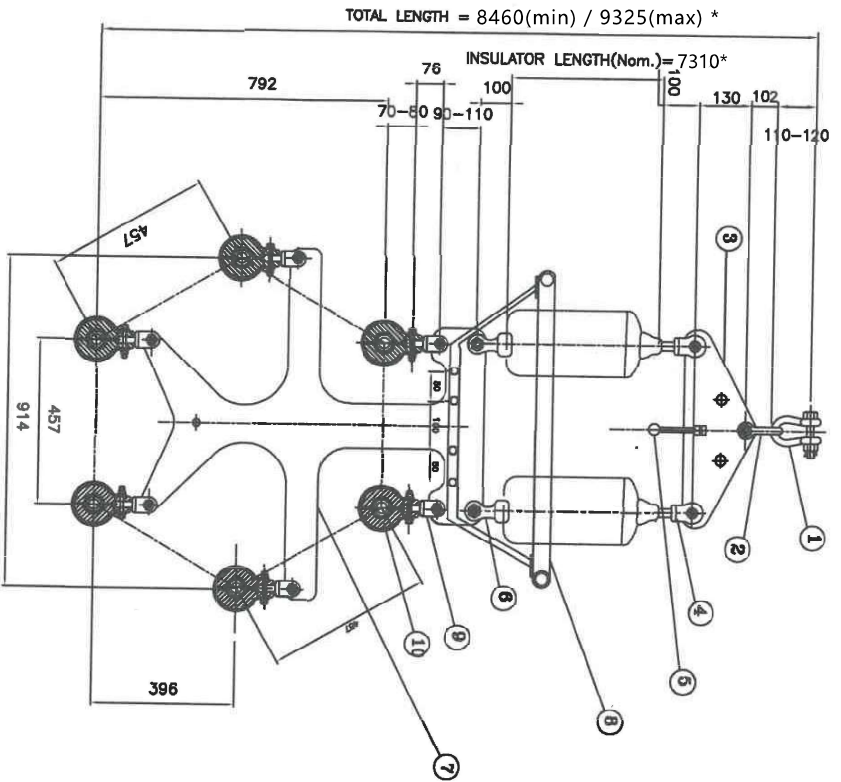
14.11.19

[Signature]
MGR
(ENGG-TL)

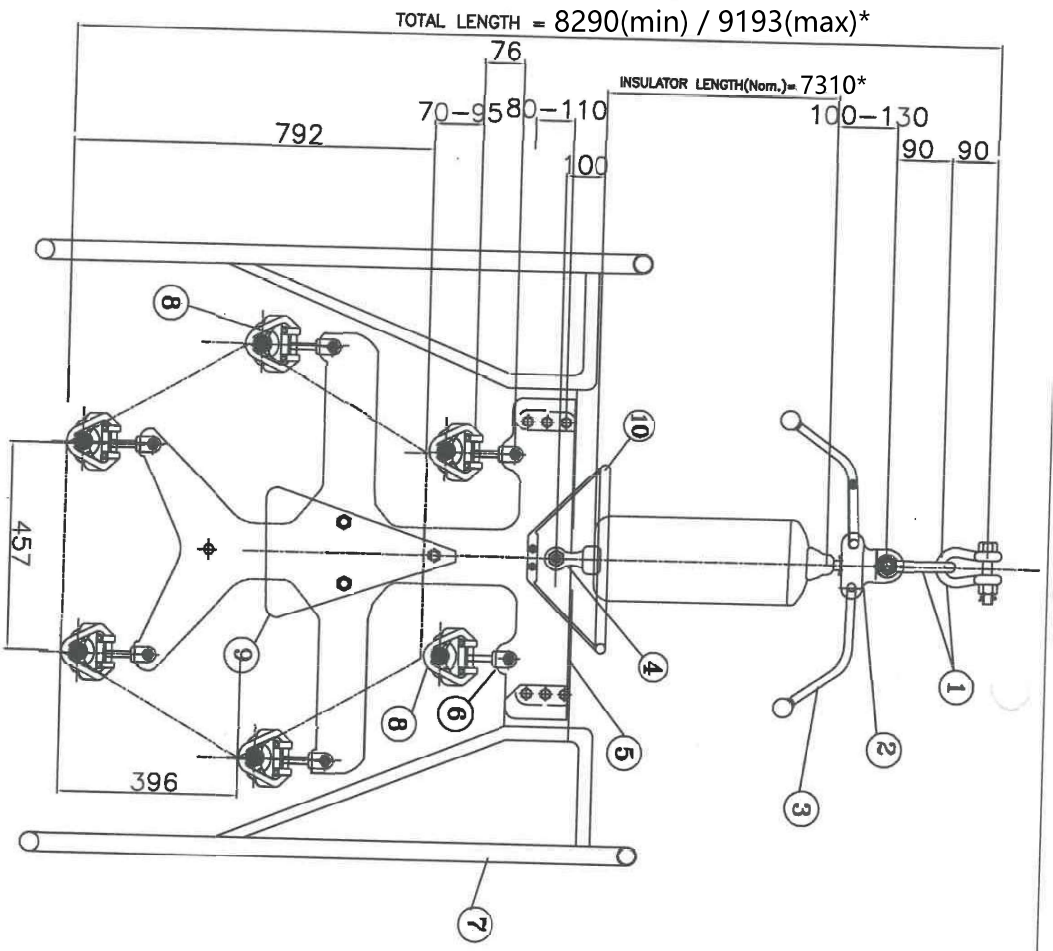
[Signature]
CH-MGR
(ENGG-TL)

[Signature]
SR. GM
(ENGG-TL)

DRG. NO.:- CC:ENGG:TL/HW/765 KV/HEXA/DIS



Sr. No.	DESCRIPTION	PART NO.	UTS	QTY.	REF DRG:CC:ENGG:TL/HW
10	SUSPENSION CLAMP(AGGS)	AGS-ZEBRA	70 KN	6	AGS-001
9	CLEVIS EYE	CE-90-01 / CE-70-01	90/70 KN	6	CE-001
8	CORONA RING	CR-765-02	----	1	CR-001
7	YOKE PLATE	YP-C-H-350-01	350 KN	1	YP-C-H-001
6	SOCKET CLEVIS	SC-175-01	175 KN	2	SC-001
5	ARCING HORN	AH-BL-02C	----	2	AH3-001
4	BALL CLEVIS	BC-175-01A / BC-175-01B	175 KN	2	BC-001
3	YOKE PLATE	YP-TR-350-02	350 KN	1	YP-TR-001
2	ANCHOR SHACKLE	AS-350-02	350 KN	1	AS-001
1	ANCHOR SHACKLE	AS-350-01	350 KN	1	AS-001



10	CORONA RING	CR-765-01	----	1	CR-001
9	COUNTER WEIGHT ASSEMBLY	CW-01	----	1	CW-001
8	SUSPENSION CLAMP(ENVV)	ENV-ZE-BRA	73 KN	6	ENV-001
7	CORONA RING	CR-765-03A	----	2	CR-002
6	CLEVIS EYE	CE-90-01 / CE-70-01	90/70 KN	6	CE-001
5	YOLKE PLATE	YP-C-H-160-02	160 KN	1	YP-C-H-001
4	SOCKET CLEVIS	SC-175-01	175 KN	1	SC-001
3	ARCING HORN (BALL)	AH-BL-01B	----	1	AHB-001
2	BALL EYE (HORN HOLDER)	BE-160-01	160 KN	1	BE-001
1	ANCHOR SHACKLE	AS-180-01	180 KN	2	AS-001
Sr. No	DESCRIPTION	PART NO.	UTS	QTY.	REF. DRG./CC/ENGG./TL/HW

TECHNICAL TAILS:

- 1) ALL DIMENSIONS ARE IN mm.
- 2) GENERAL TOLERANCES : ±3%.
- 3) ALL FERROUS PARTS HOT DIP GALVANISED & SPRING WASHER ELECTRO GALVANISED AS PER POWERGRID SPECIFICATION.
- 4) ALL DIMENSIONS ARE AFTER GALVANISATION EXCEPT DRILLED HOLES.
- 5) HARDWARE TOLERANCES ON LENGTH ±2%.

*Revision: Change in length due to use of DISC insulator for 31mm/kv

**POWER GRID CORPORATION
OF INDIA LIMITED**
(A GOVERNMENT OF INDIA ENTERPRISE)



TITLE:- 765 KV SINGLE "I" SUSPENSION PILOT STRING
FOR SIX BUNDLE "ZEBRA" ACSR CONDUCTOR WITH COUNTER WEIGHT.
UTS-160 KN

CLEARED BY

[Signature]
SR. GM
(ENGG-TL)

[Signature]
CGM
(ENGG-TL)

[Signature]
ED
(ENGG)

DATE: 14.11.11
MGR (ENGG-TL)
CH-MGR (ENGG-TL)
GM (ENGG-TL)

DRG. NO.:-- CC:ENGG:TL/HW/765 KV/HEXA/SISP

